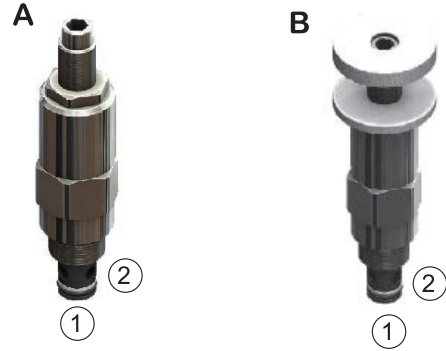
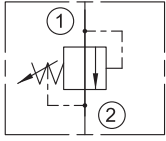


迴路符號SYMBOLS



基本規格SPECIFICATIONS

RV-20 系列 SERIES		
最大工作壓力 Maximum Pressure	bar	240 bar (3500 psi)
最大流量 Maximum Flow	LPM	RV08-20 = 22 LPM (6 GPM)
		RV10-20 = 38 LPM (10 GPM)
內漏量 Internal Leakage	cc / min	0.25 (cc / min)
使用油品 Fluid Type		礦物性 耐磨性 Mineral, Anti-Wear
黏度範圍 Viscosity	cSt	7.4-420 cSt (50-2000 ssu)
使用溫度 Operating Temperature	°C	-40 -120°C
清潔度 Contamination Level		NAS 12 級以內 Under NAS Class 12
表面處理 Surface Treatment		防銹處理 Corrosion Treatment

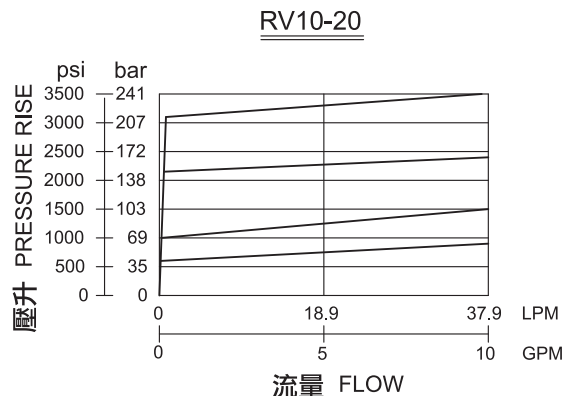
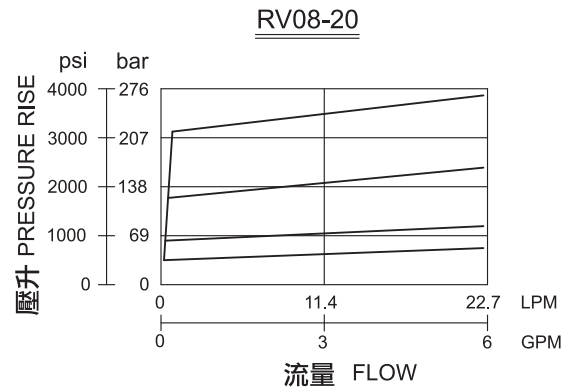
型號說明HOW TO ORDER

RV 08 -20 -A -N -33
 ① ② ③ ④ ⑤ ⑥

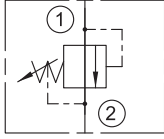
- ① 閥系列 Valve Series
 RV = 插式溢流閥
 Cartridge Relief Valve
- ② 安裝口徑 Cavity (See Page G-z01)
 08 = VC08-2
 10 = VC10-2
- ③ 設計型號 Design No.
 RV-20 = 插式直動型溢流閥
 Cartridge Direct-acting Poppet-type Relief Valve
- ④ 調整桿型式 Adjustment
 A = 內六角調整 Hex. Screw With Nut
 B = 鋁合金旋鈕調整 Alum. Knob
- ⑤ 密封件 Seals
 N = 標準 Standard
 V = 氟橡膠 Fluorocarbon
- ⑥ 壓力範圍 Pressure range
 5 = 3.4-34.5 bar (50-500 psi)
 9 = 3.4-62.0 bar (50-900 psi)
 18 = 6.9 - 124.0 bar (100-1800 psi)
 33 = 6.9 - 227.5 bar (100-3300 psi)

特性曲線PERFORMANCE

流量特性曲線 Flow Characteristic
 測試條件 Test Conditions
 溫度 Oil Temperature: 40°C
 黏度 Viscosity: 32cSt (150 ssu)



迴路符號 SYMBOLS



基本規格 SPECIFICATIONS

RV-26 系列 SERIES		
最大工作壓力 Maximum Pressure	bar	345 bar (5000 PSI)
最大流量 Maximum Flow	LPM	RV10-26 = 113 LPM (30 GPM)
		RV12-26 = 150 LPM (40 GPM)
		RV16-26 = 300 LPM (80 GPM)
內漏量 Internal Leakage	cc / min	115 (cc / min)
使用油品 Fluid Type		礦物性 耐磨性 Mineral, Anti-Wear
黏度範圍 Viscosity	cSt	7.4-420 cSt (50-2000 ssu)
使用溫度 Operating Temperature	°C	-40 -120°C
清潔度 Contamination Level		NAS 12 級以內 Under NAS Class 12
表面處理 Surface Treatment		防銹處理 Corrosion Treatment

型號說明 HOW TO ORDER

RV 10 -26 -A -N -30
 ① ② ③ ④ ⑤ ⑥

- ① 閥系列 Valve Series
 RV = 插式溢流閥
 Cartridge Relief Valve
- ② 安裝口徑 Cavity (See Page G-z01-z02)
 10 = VC10-2
 12 = VC12-2
 16 = VC16-2
- ③ 設計型號 Design No.
 RV-26 = 插式先導式溢流閥
 Cartridge Pilot-operated, Spool-type Relief Valve
- ④ 調整桿型式 Adjustment
 A = 內六角調整 Hex. Screw With Nut
 B = 鋁合金旋鈕調整 Alum. Knob
- ⑤ 密封件 Seals
 N = 標準 Standard
 V = 氟橡膠 Fluorocarbon
- ⑥ 壓力範圍 Pressure range
 RV10/12-26
 04 = 6.9 - 27.6 bar (100-400 psi)
 15 = 10.3 - 103.4 bar (150-1500 psi)
 30 = 13.8 - 206.9 bar (200-3000 psi)
 50 = 20.7 - 344.8 bar (300-5000 psi)
 RV16-26
 03 = 9.7 - 20.7 bar (140-300 psi)
 06 = 15.9 - 41.4 bar (230-600 psi)
 15 = 36.6 - 103.5 bar (530-1500 psi)
 35 = 82.8 - 241.6 bar (1200-3500 psi)

特性曲線 PERFORMANCE

流量特性曲線 Flow Characteristic
 測試條件 Test Conditions
 溫度 Oil Temperature: 40°C
 黏度 Viscosity: 32cSt (150 ssu)

